

PART OF THE NORTH 1/2 OF SEC. 24, T.6N., R.1E., S.L.B. & M.

# VALLEY-LAKE ESTATES NO. 2

LOTS 6-12, 25-26

TAXING UNIT: 318

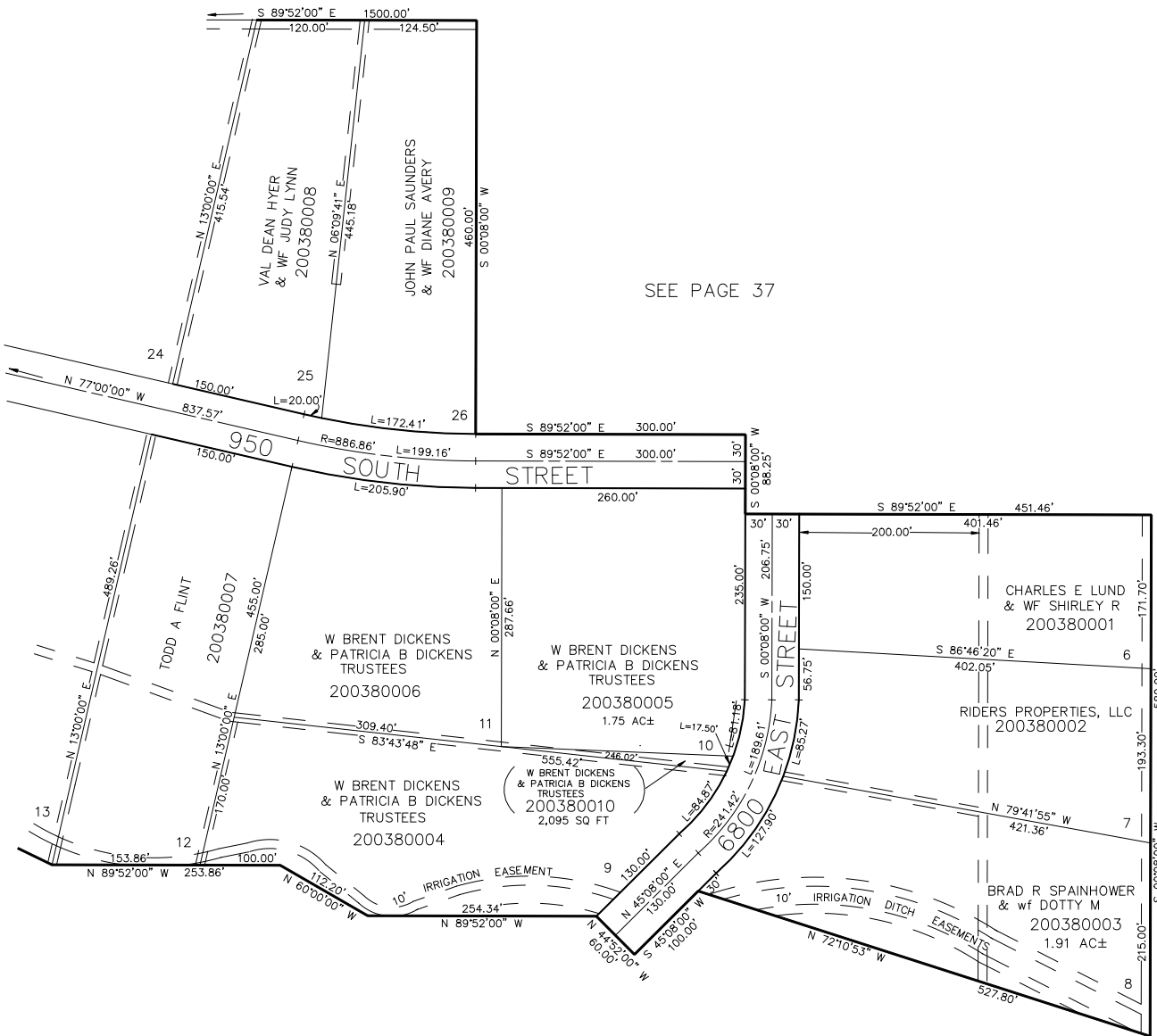
IN WEBER COUNTY

SCALE 1" = 100'

SEE PAGE 37

SEE PAGE 39

SEE PAGE 36



10' UTILITY & DRAINAGE EASEMENTS EACH SIDE OF PROPERTY LINES AS INDICATED BY DASHED LINES EXCEPT AS OTHERWISE SHOWN.

SEE PAGE 45

FOR COMPLETE ENG DATA SEE ORIGINAL DEDICATION PLAT IN BOOK 15, PAGE 27 OF RECORDS.